



WISSNER

CNC TECHNOLOGIES



WiTEC BASIC

A modular concept of highly dynamic Precision CNC Routers, HSC-Milling Machines, and Laser Machines to suit your individual production needs.

Reliable Machines

**made
in
Germany**

Series WiTEC BASIC



Dimensions	WiTEC 15	WiTEC 2015	WiTEC 32	WiTEC 42
Table Size X / Y / Z in mm:	1250 x 1550 x 180	2050 x 1550 x 180	3050 x 2050 x 180	4050 x 2050 x 180
Clearance Z-Axis in mm:	150	150	150	150
Outside Dimensions W x L x H in mm:	2100 x 2550 x 2300	2100 x 3550 x 2300	2600 x 4550 x 2300	2600 x 5550 x 2300



Modular design of the WiTEC BASIC enables customization to fit your production needs

W.hold&press



- A patented, unique system with vast clamping power
- non-intrusive fastening of the material without supplements at the milling position
- perfect milling of delicate as well as larger workpieces whilst achieving the optimal surface quality
- Tornado Suction System for chip and dust removal

Motors and Drives



- High-Precision ball-screw system and AC Servo Motors
- enables very precise milling
- low-maintenance drive concept
- rapid traverse speed up to 15 m/min



Vacuum Clamping System Standard



special-conditioned wooden MDF plate with large clamping power, cost efficient, and easy to replace.

Professional



aluminum based Precision Vacuum Clamp Panel controllable in sections. Energy efficient, ideal for work flows with simultaneous milling and feeding.

Vacuum Paper



cost efficient spacer material for fast removal of finished goods away from the working area. Reusable and protects the table surface.

Options

Tool Changer



- capacity for up to 20 tools
- safe-hold functionality
- positioned at pick-up place or movable with portal
- tool measuring and checking through Laser or mechanical precision sensor

High-frequency Spindle

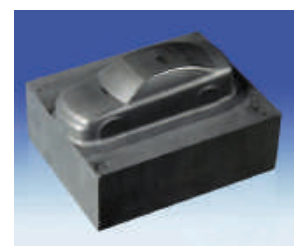


- up to 12 kW power for milling of plastics, aluminum, CFRP, GFRP, wood, non-ferrous metal, and stainless steel
- ranges to 60000 rpm for filigree works
- consistent, standardized HSK (hollow taper shaft) interfaces

Laser Cutting



- patented laser table for perfect fume removal
- encapsulated system for cutting and engraving of plastics and wood material
- open system for up to 2 kW Laser power



Wissner - your partner for system solutions

Wissner's Complete Service Package is tailored to meet your individual business needs:

- comprehensive, competent consultation to optimize your work flow and machine design
- individual workshops for test milling of your sample parts in our show rooms
- defining work-flow strategies, optimizing throughput time according to your production needs
- customized and comprehensive training on your machine together with the FAT (Factory Acceptance Test)
- free service hot-line for first level support
- Service Level Agreements (SLA) according to your business needs

Customized Solutions

Based on more than 30 years experience, we always find the optimal solution for your particular requirements and also offer customized designs:



Rotary table, thus providing two autonomous work zones



Linear Motor driven machine with cutting speed up to 120 m/min



Work Centers with up to 15 spindles



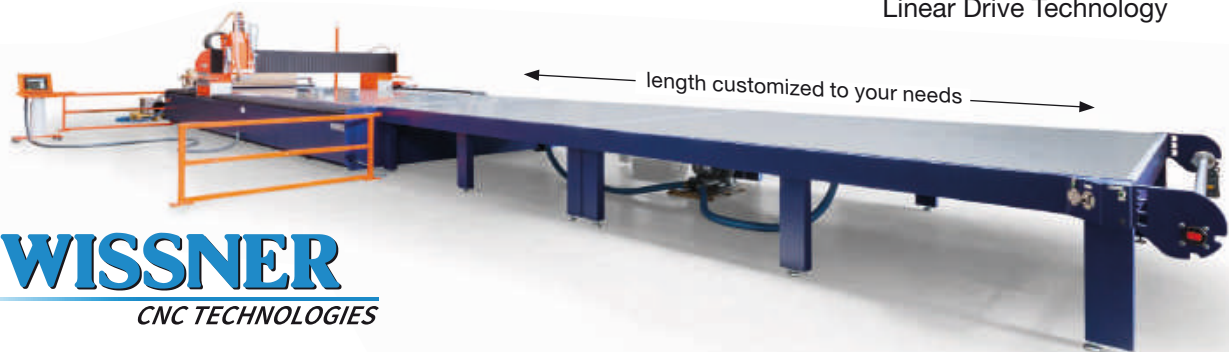
5D milling with rotating spindle and rotary table



Moving enclosure and automatic feed



Modular Performance Concept: highly dynamic HSC router with Linear Drive Technology



WISSNER
CNC TECHNOLOGIES

WISSNER Gesellschaft für
Maschinenbau mbH
August-Spindler-Strasse 14
37079 Goettingen
Germany
phone + 49 551/50508-0
fax + 49 551/50508-35
E-Mail: info@wissner-cnc.com
Internet: www.wissner-cnc.com

